



Official Basketball Box Score - Final  
**Seattle U at George Washington**  
 12/25/22 SimpliFi Arena at Stan Sheriff Center, Honolulu  
 2022-23 Men's Basketball

Game Time: 8:30 AM  
 Game Duration: 1:59

Officials: Amy Bonner, Bart Lenox, Ryan Wells

Seattle U - 85

Record: 9-4

NO.	Name	Min	FG		3P	FT		Rebounds			Fouls		TP	AS	TO	ST	Blocks		+/-
			M-A	M-A	M-A	OR	DR	TOT	PF	FD	BS	BA							
15	Emeka Udenyi	F 25:13	6-9	0-0	0-0	4	6	10	1	0	12	0	2	1	0	1	0	1	10
25	Brandton Chatfield	F 31:58	7-13	2-6	0-0	3	6	9	4	2	16	2	0	1	0	1	0	1	22
0	Alex Schumacher	G 33:10	3-13	1-7	1-2	0	7	7	3	2	8	8	2	0	0	1	0	1	36
5	Cameron Tyson	G 30:06	5-12	3-9	7-7	1	2	3	3	1	20	3	6	0	0	0	0	0	16
11	Riley Grigsby	G 26:38	4-8	2-6	0-0	1	2	3	4	0	10	5	1	0	0	0	0	0	11
35	Matthew Levis	16:40	0-3	0-2	3-3	0	1	1	1	2	3	2	0	0	0	0	0	0	-2
21	Viktor Rajković	18:55	5-8	2-5	0-0	2	3	5	2	2	12	0	1	0	0	0	0	0	10
33	Kobe Williamson	08:02	1-4	0-1	0-0	1	0	1	3	0	2	1	0	1	0	0	0	0	-4
23	Seyi Reiley	08:10	0-0	0-0	2-2	0	4	4	0	1	2	0	0	0	0	0	0	0	-1
12	Brody Nunn	00:34	0-0	0-0	0-0	0	0	0	0	0	0	0	0	0	0	0	0	0	-4
41	Jaren Nafarrete	00:34	0-1	0-0	0-0	0	0	0	0	0	0	0	0	0	0	0	0	0	-4
Team						5	0	5			0		1						
<b>Totals</b>			31-71	10-36	13-14	17	31	48	21	10	85	21	13	3	0	3	18		

Shooting By Period		
1st FG%	18-38	47.4%
3PT%	3-16	18.8%
FT%	2-3	66.7%
2nd FG%	13-33	39.4%
3PT%	7-20	35.0%
FT%	11-11	100%
GM FG%	31-71	43.7%
3PT%	10-36	27.8%
FT%	13-14	92.9%

Dead Ball Rebounds: 0, 1

Technical Fouls: NONE

George Washington - 67

Record: 6-7

NO.	Name	Min	FG		3P	FT		Rebounds			Fouls		TP	AS	TO	ST	Blocks		+/-
			M-A	M-A	M-A	OR	DR	TOT	PF	FD	BS	BA							
4	Ricky Lindo Jr.	F 15:48	1-2	0-1	3-5	0	1	1	1	3	5	0	1	1	1	0	0	0	-15
13	Hunter Dean	F 09:54	1-2	0-0	0-0	0	0	0	2	1	2	1	1	0	0	0	0	0	-8
2	Maximus Edwards	G 32:29	6-11	1-4	3-5	1	1	2	0	5	16	2	2	1	0	0	0	-22	
10	Brendan Adams	G 33:33	7-13	2-6	3-5	1	2	3	1	4	19	0	1	0	0	0	0	-20	
11	James Bishop	G 34:18	4-13	2-6	2-2	0	3	3	3	2	12	3	2	1	0	0	0	-16	
3	Amir Harris	20:55	0-2	0-2	3-4	0	4	4	0	3	3	1	0	2	0	0	0	-2	
21	Noel Brown	16:47	1-2	0-0	2-4	0	4	4	2	2	4	0	1	1	0	0	0	-4	
14	Keegan Harvey	10:54	1-4	1-4	1-2	0	1	1	1	1	4	0	1	0	1	0	0	0	
20	Qwanzi Samuels	21:34	1-3	0-2	0-2	1	2	3	0	0	2	0	1	0	1	0	0	-3	
34	Theofanis Stamoulis	01:57	0-1	0-1	0-0	0	0	0	0	0	0	0	0	0	0	0	0	0	
0	Laziz Talipov	01:51	0-0	0-0	0-0	0	0	0	0	0	0	0	0	0	0	0	0	0	
Team						1	5	6			0		0						
<b>Totals</b>			22-53	6-26	17-29	4	23	27	12	21	67	7	10	6	3	0	-18		

Shooting By Period		
1st FG%	7-22	31.8%
3PT%	2-11	18.2%
FT%	8-18	44.4%
2nd FG%	15-31	48.4%
3PT%	4-15	26.7%
FT%	9-11	81.8%
GM FG%	22-53	41.5%
3PT%	6-26	23.1%
FT%	17-29	58.6%

Dead Ball Rebounds: 7, 1

Technical Fouls: Edwards 2<sup>nd</sup> 13:28 Coach 2<sup>nd</sup> 6:54 Bench 2<sup>nd</sup> 6:54

	SEA	GWJ
Biggest lead	23 (2 <sup>nd</sup> 17:13)	3 (1 <sup>st</sup> 18:01)
Best Scoring Run	15 (1 <sup>st</sup> 1:23)	10 (2 <sup>nd</sup> 8:20)
Lead Changes	1	
Times Tied	5	
Time with Lead	33:37	02:31

Points from	SEA	GWJ
Turnovers	16	9
Paint	42	30
Second Chance	14	0
Fast Breaks	7	8
Bench	19	13

	Period by Period Scoring		
	1st	2nd	TOT
SEA	41	44	85
GWJ	24	43	67



Official Basketball Play by Play - First Half  
**Seattle U at George Washington**  
 12/25/22 SimpliFi Arena at Stan Sheriff Center, Honolulu  
 2022-23 Men's Basketball

Game Time: 8:30 AM  
 Game Duration: 1:59

Officials: Amy Bonner, Bart Lenox, Ryan Wells

**Period 1**

**Period Starters:**

<b>GWU</b>	2 Edwards M	4 Lindo Jr. R	10 Adams B	11 Bishop J	13 Dean H
<b>SEA</b>	0 Schumacher A	5 Tyson C	11 Grigsby R	15 Udenyi E	25 Chatfield B

Game Time	GWU	Score	Diff	SEA
20:00	13 DEAN H jumpball won			25 CHATFIELD B jumpball lost
19:41	11 BISHOP J 2pt FG in the paint, jump shot made (2)	<b>2-0</b>	<b>2</b>	
19:07				15 UDENYI E 2pt FG in the paint, jump shot missed
19:06	defensive rebound (1)			
18:54	11 BISHOP J turnover bad pass (1)			15 UDENYI E steal (1)
18:44		<b>2-2</b>	<b>0</b>	15 UDENYI E 2pt FG from turnover in the paint, layup made (2)
18:44				5 TYSON C assist (1)
18:29	4 LINDO JR. R foul drawn (1)			15 UDENYI E foul shooting (1 - 1)
18:29	4 LINDO JR. R free throw 1 - 3 missed			
18:29	offensive dead ball rebound (1)			
18:29	4 LINDO JR. R free throw 2 - 3 missed			
18:29	offensive dead ball rebound (2)			
18:29	4 LINDO JR. R free throw 3 - 3 made (1)	<b>3-2</b>	<b>1</b>	
18:20				5 TYSON C 3pt FG , jump shot missed
18:17	defensive rebound (2)			
18:01	4 LINDO JR. R 2pt FG in the paint, dunk, made (3)	<b>5-2</b>	<b>3</b>	
18:01	13 DEAN H assist (1)			
17:48				11 GRIGSBYR 3pt FG , jump shot missed
17:45				25 CHATFIELD B offensive rebound (1)
17:39				0 SCHUMACHER A 2pt FG second chance in the paint, layup missed
17:36				25 CHATFIELD B offensive rebound (2)
17:35				25 CHATFIELD B 2pt FG second chance in the paint, layup missed
17:28				offensive rebound (3)
17:28	jump ball situation			
17:22		<b>5-5</b>	<b>0</b>	25 CHATFIELD B 3pt FG second chance, jump shot made (3)
17:22				11 GRIGSBYR assist (1)
16:50	11 BISHOP J 2pt FG in the paint, layup missed			
16:47				15 UDENYI E defensive rebound (1)
16:42				0 SCHUMACHER A 3pt FG , jump shot missed
16:39	2 EDWARDS M defensive rebound (1)			
16:17	11 BISHOP J foul drawn (1)			0 SCHUMACHER A foul shooting (1 - 2)
16:17	11 BISHOP J free throw 1 - 2 made (3)	<b>6-5</b>	<b>1</b>	
16:17	11 BISHOP J free throw 2 - 2 made (4)	<b>7-5</b>	<b>2</b>	
16:17	10 ADAMS B substitution out			
16:17	3 HARRIS A substitution in			
16:09		<b>7-7</b>	<b>0</b>	15 UDENYI E 2pt FG in the paint, layup made (4)
16:09				0 SCHUMACHER A assist (1)
15:56	4 LINDO JR. R foul drawn (2)			11 GRIGSBYR foul shooting (1 - 3)
15:56	13 DEAN H substitution out			
15:56	21 BROWN N substitution in			
15:56				0 SCHUMACHER A substitution out
15:56				35 LEVIS M substitution in
15:56	4 LINDO JR. R free throw 1 - 2 made (4)	<b>8-7</b>	<b>1</b>	



Official Basketball Play by Play - First Half  
**Seattle U at George Washington**  
 12/25/22 SimpliFi Arena at Stan Sheriff Center, Honolulu  
 2022-23 Men's Basketball

Game Time: 8:30 AM  
 Game Duration: 1:59

Officials: Amy Bonner, Bart Lenox, Ryan Wells

Game Time	GWU	Score	Diff	SEA
15:56	4 LINDO JR. R free throw 2 - 2 made (5)	9-7	2	
15:37		9-9	0	5 TYSON C 2pt FG in the paint, jump shot made (2)
15:22	11 BISHOP J 2pt FG in the paint, layup missed			
15:19				15 UDENYI E defensive rebound (2)
15:05				35 LEVIS M 3pt FG , jump shot missed
15:01	3 HARRIS A defensive rebound (1)			
14:56	2 EDWARDS M 3pt FG , jump shot missed			
14:53				defensive dead ball rebound (1)
14:53	21 BROWN N foul personal (1 - 1)			25 CHATFIELD B foul drawn (1)
14:53				15 UDENYI E substitution out
14:53				21 RAJKOVIĆ V substitution in
14:26				5 TYSON C 2pt FG in the paint, layup missed
14:24				21 RAJKOVIĆ V offensive rebound (1)
14:21		9-11	-2	21 RAJKOVIĆ V 2pt FG second chance in the paint, layup made (2)
14:20	4 LINDO JR. R substitution out			
14:20	14 HARVEY K substitution in			
13:57	2 EDWARDS M 2pt FG in the paint, layup made (2)	11-11	0	
13:35				25 CHATFIELD B 3pt FG , jump shot missed
13:31	defensive rebound (5)			
13:30	2 EDWARDS M foul drawn (1)			11 GRIGSBY R foul personal (2 - 4)
13:30	2 EDWARDS M substitution out			
13:30	10 ADAMS B substitution in			
13:30				11 GRIGSBY R substitution out
13:30				25 CHATFIELD B substitution out
13:30				0 SCHUMACHER A substitution in
13:30				33 WILLIAMSON K substitution in
13:21	11 BISHOP J foul offensive (1 - 2)			35 LEVIS M foul drawn (1)
13:21	11 BISHOP J turnover offensive (2)			
13:13		11-13	-2	21 RAJKOVIĆ V 2pt FG from turnover in the paint, layup made (4)
13:13				33 WILLIAMSON K assist (1)
12:50	21 BROWN N foul offensive (2 - 3)			21 RAJKOVIĆ V foul drawn (1)
12:50	21 BROWN N turnover offensive (1)			
12:50	21 BROWN N substitution out			
12:50	13 DEAN H substitution in			
12:35				33 WILLIAMSON K 2pt FG from turnover in the paint, layup missed
12:33	3 HARRIS A defensive rebound (2)			
12:21	13 DEAN H turnover bad pass (1)			
12:16		11-15	-4	0 SCHUMACHER A 2pt FG fast break from turnover in the paint, layup made (2)
12:16	13 DEAN H foul shooting (1 - 4)			0 SCHUMACHER A foul drawn (1)
12:16	3 HARRIS A substitution out			
12:16	14 HARVEY K substitution out			
12:16	2 EDWARDS M substitution in			
12:16	4 LINDO JR. R substitution in			
12:16				5 TYSON C substitution out
12:16				25 CHATFIELD B substitution in
12:16				0 SCHUMACHER A free throw fast break 1 - 1 missed
12:16				offensive rebound (7)
12:16				33 WILLIAMSON K substitution out



Official Basketball Play by Play - First Half  
**Seattle U at George Washington**  
 12/25/22 SimpliFi Arena at Stan Sheriff Center, Honolulu  
 2022-23 Men's Basketball

Game Time: 8:30 AM  
 Game Duration: 1:59

Officials: Amy Bonner, Bart Lenox, Ryan Wells

Game Time	GWU	Score	Diff	SEA
12:16				23 REILEY S substitution in
12:12				21 RAJKOVIĆ V 3pt FG second chance, jump shot missed
12:09	11 BISHOP J defensive rebound (1)			
11:56				25 CHATFIELD B substitution out
11:56				33 WILLIAMSON K substitution in
11:55	4 LINDO JR. R turnover lost ball (1)			33 WILLIAMSON K steal (1)
11:46		<b>11-17</b>	<b>-6</b>	21 RAJKOVIĆ V 2pt FG from turnover in the paint, layup made (6)
11:46				0 SCHUMACHER A assist (2)
11:23	2 EDWARDS M 2pt FG in the paint, jump shot made (4)	<b>13-17</b>	<b>-4</b>	
11:11	4 LINDO JR. R foul personal (1 - 5)			21 RAJKOVIĆ V foul drawn (2)
11:11	11 BISHOP J substitution out			
11:11	3 HARRIS A substitution in			
11:03				21 RAJKOVIĆ V turnover bad pass (1)
10:45	10 ADAMS B foul drawn (1)			33 WILLIAMSON K foul shooting (1 - 5)
10:45	10 ADAMS B free throw 1 - 2 made (1)	<b>14-17</b>	<b>-3</b>	
10:45				33 WILLIAMSON K substitution out
10:45				35 LEVINS M substitution out
10:45				5 TYSON C substitution in
10:45				25 CHATFIELD B substitution in
10:45	10 ADAMS B free throw 2 - 2 missed			
10:45				23 REILEY S defensive rebound (1)
10:30	13 DEAN H foul shooting (2 - 6)			23 REILEY S foul drawn (1)
10:30		<b>14-18</b>	<b>-4</b>	23 REILEY S free throw 1 - 2 made (1)
10:30	13 DEAN H substitution out			
10:30	11 BISHOP J substitution in			
10:30		<b>14-19</b>	<b>-5</b>	23 REILEY S free throw 2 - 2 made (2)
10:14	3 HARRIS A 3pt FG , jump shot missed			
10:11				0 SCHUMACHER A defensive rebound (1)
10:08		<b>14-22</b>	<b>-8</b>	5 TYSON C 3pt FG fast break, jump shot made (5)
10:08				0 SCHUMACHER A assist (3)
09:50	10 ADAMS B 3pt FG , jump shot missed			
09:46				21 RAJKOVIĆ V defensive rebound (2)
09:42	2 EDWARDS M foul drawn (2)			5 TYSON C foul offensive (1 - 6)
09:42				5 TYSON C turnover offensive (1)
09:28	2 EDWARDS M 2pt FG from turnover in the paint, layup made (6)	<b>16-22</b>	<b>-6</b>	
09:18		<b>16-24</b>	<b>-8</b>	25 CHATFIELD B 2pt FG in the paint, dunk, made (5)
09:18				0 SCHUMACHER A assist (4)
09:11	Timeout 30 Sec			
09:11				21 RAJKOVIĆ V substitution out
09:11				11 GRIGSBY R substitution in
08:58	2 EDWARDS M 2pt FG in the paint, layup missed			
08:56				23 REILEY S defensive rebound (2)
08:48				11 GRIGSBY R 3pt FG , jump shot missed
08:45	defensive rebound (8)			
08:18	11 BISHOP J 3pt FG , jump shot missed			
08:15				0 SCHUMACHER A defensive rebound (2)
08:02	11 BISHOP J steal (1)			5 TYSON C turnover bad pass (2)
07:57	10 ADAMS B turnover out of bounds (1)			
07:57	3 HARRIS A substitution out			



Official Basketball Play by Play - First Half  
**Seattle U at George Washington**  
 12/25/22 SimpliFi Arena at Stan Sheriff Center, Honolulu  
 2022-23 Men's Basketball

Game Time: 8:30 AM  
 Game Duration: 1:59

Officials: Amy Bonner, Bart Lenox, Ryan Wells

Game Time	GWU	Score	Diff	SEA
07:57	20 SAMUELS Q substitution in			
07:57				23 REILEY S substitution out
07:57				15 UDENYI E substitution in
07:44		<b>16-26</b>	<b>-10</b>	25 CHATFIELD B 2pt FG from turnover in the paint, hook shot made (7)
07:38	2 EDWARDS M3pt FG , jump shot made (9)	<b>19-26</b>	<b>-7</b>	
07:16				0 SCHUMACHER A3pt FG , jump shot missed
07:13	20 SAMUELS Q defensive rebound (1)			
07:02	2 EDWARDS Mturnover travel (1)			
06:49		<b>19-28</b>	<b>-9</b>	25 CHATFIELD B 2pt FG from turnover in the paint, hook shot made (9)
06:49				0 SCHUMACHER Aassist (5)
06:28	2 EDWARDS Mturnover bad pass (2)			
06:22		<b>19-30</b>	<b>-11</b>	11 GRIGSBY R 2pt FG fast break from turnover in the paint, layup made (2)
06:22				0 SCHUMACHER Aassist (6)
06:00	10 ADAMS B 3pt FG , jump shot missed			
05:57				0 SCHUMACHER A defensive rebound (3)
05:51	11 BISHOP J foul drawn (2)			5 TYSON C foul offensive (2 - 7)
05:51				5 TYSON C turnover offensive (3)
05:40	10 ADAMS B 2pt FG from turnover in the paint, layup missed			
05:36				25 CHATFIELD B defensive rebound (3)
05:16				25 CHATFIELD B 3pt FG , jump shot missed
05:13				5 TYSON C offensive rebound (1)
05:12		<b>19-32</b>	<b>-13</b>	5 TYSON C 2pt FG second chance in the paint, layup made (7)
04:57	11 BISHOP J 2pt FG in the paint, jump shot missed			
04:54				15 UDENYI E defensive rebound (3)
04:51	4 LINDO JR. R steal (1)			15 UDENYI E turnover lost ball (1)
04:46	10 ADAMS B foul drawn (2)			25 CHATFIELD B foul personal (1 - 8)
04:46				5 TYSON C substitution out
04:46				11 GRIGSBY R substitution out
04:46				25 CHATFIELD B substitution out
04:46				21 RAJKOVIĆ V substitution in
04:46				33 WILLIAMSON K substitution in
04:46				35 LEVIS M substitution in
04:46	10 ADAMS B 1&1 free throw 1 missed			
04:46				35 LEVIS M defensive rebound (1)
04:46		<b>19-34</b>	<b>-15</b>	0 SCHUMACHER A2pt FG in the paint, driving layup made (4)
04:31	Timeout 30 Sec			
04:19	2 EDWARDS M2pt FG in the paint, layup missed			
04:17	2 EDWARDS M offensive rebound (2)			
04:16	2 EDWARDS M foul drawn (3)			33 WILLIAMSON K foul shooting (2 - 9)
04:16	2 EDWARDS M free throw 1 - 2 missed			
04:16	offensive dead ball rebound (3)			
04:16	2 EDWARDS M free throw 2 - 2 missed			
04:16				15 UDENYI E defensive rebound (4)
03:54				0 SCHUMACHER A3pt FG , jump shot missed
03:50				15 UDENYI E offensive rebound (5)
03:47				0 SCHUMACHER A2pt FG second chance in the paint, layup blocked
03:47	20 SAMUELS Q block (1)			
03:46				offensive rebound (20)



Official Basketball Play by Play - First Half  
**Seattle U at George Washington**  
 12/25/22 SimpliFi Arena at Stan Sheriff Center, Honolulu  
 2022-23 Men's Basketball

Game Time: 8:30 AM  
 Game Duration: 1:59

Officials: Amy Bonner, Bart Lenox, Ryan Wells

Game Time	GWU	Score	Diff	SEA
03:46				33 WILLIAMSON K substitution out
03:46				25 CHATFIELD B substitution in
03:46	Timeout media			
03:45				25 CHATFIELD B 2pt FG second chance in the paint, layup blocked
03:45	4 LINDO JR. R block (1)			
03:45				25 CHATFIELD B offensive rebound (4)
03:30				0 SCHUMACHER A 3pt FG second chance, jump shot missed
03:27	4 LINDO JR. R defensive rebound (1)			
03:22	4 LINDO JR. R 3pt FG , jump shot missed			
03:19				0 SCHUMACHER A defensive rebound (4)
03:00		<b>19-36</b>	<b>-17</b>	15 UDENYI E 2pt FG in the paint, hook shot made (6)
02:31	11 BISHOP J 3pt FG , jump shot missed			
02:27	10 ADAMS B offensive rebound (1)			
02:11	20 SAMUELS Q 3pt FG second chance, jump shot missed			
02:08	offensive dead ball rebound (4)			
02:08	4 LINDO JR. R foul drawn (3)			0 SCHUMACHER A foul personal (2 - 10)
02:08	4 LINDO JR. R substitution out			
02:08	21 BROWN N substitution in			
02:08	20 SAMUELS Q free throw 1 - 2 missed			
02:08	offensive dead ball rebound (5)			
02:08	20 SAMUELS Q free throw 2 - 2 missed			
02:08				25 CHATFIELD B defensive rebound (5)
01:54				21 RAJKOVIĆ V 3pt FG , jump shot missed
01:51				15 UDENYI E offensive rebound (6)
01:50		<b>19-38</b>	<b>-19</b>	15 UDENYI E 2pt FG second chance in the paint, layup made (8)
01:35	2 EDWARDS M 3pt FG , jump shot missed			
01:31				0 SCHUMACHER A defensive rebound (5)
01:23		<b>19-41</b>	<b>-22</b>	21 RAJKOVIĆ V 3pt FG , jump shot made (9)
01:23				35 LEVS M assist (1)
01:04	21 BROWN N foul drawn (1)			35 LEVS M foul shooting (1 - 11)
01:04	21 BROWN N free throw 1 - 2 missed			
01:04	offensive dead ball rebound (6)			
01:04	20 SAMUELS Q substitution out			
01:04	3 HARRIS A substitution in			
01:04	21 BROWN N free throw 2 - 2 missed			
01:04				25 CHATFIELD B defensive rebound (6)
00:42				0 SCHUMACHER A 3pt FG , jump shot missed
00:38	21 BROWN N defensive rebound (1)			
00:27	10 ADAMS B foul drawn (3)			21 RAJKOVIĆ V foul personal (1 - 12)
00:27	10 ADAMS B free throw 1 - 2 made (2)	<b>20-41</b>	<b>-21</b>	
00:27	21 BROWN N substitution out			
00:27	20 SAMUELS Q substitution in			
00:27				15 UDENYI E substitution out
00:27				5 TYSON C substitution in
00:27				Timeout 30 Sec
00:27	10 ADAMS B free throw 2 - 2 made (3)	<b>21-41</b>	<b>-20</b>	
00:18				5 TYSON C turnover lost ball (4)
00:18	20 SAMUELS Q substitution out			
00:18	14 HARVEY K substitution in			



Official Basketball Play by Play - First Half  
**Seattle U at George Washington**  
12/25/22 SimpliFi Arena at Stan Sheriff Center, Honolulu  
2022-23 Men's Basketball

Game Time: 8:30 AM  
Game Duration: 1:59

Officials: Amy Bonner, Bart Lenox, Ryan Wells

Game Time	GWU	Score	Diff	SEA
00:18				0 SCHUMACHER A substitution out
00:18				5 TYSON C substitution out
00:18				15 UDENYI E substitution in
00:18				23 REILEY S substitution in
00:03	14 HARVEY K 3pt FG from turnover, jump shot made (3)	<b>24-41</b>	<b>-17</b>	
00:03	11 BISHOP J assist (1)			
<b>END OF PERIOD</b>				
<b>GWU 24-41 SEA</b>				



Seattle U - 41

NO.	Name	F	Min	FG	3P	FT	Rebounds			Fouls		TP	AS	TO	ST	Blocks		+/-
				M-A	M-A	M-A	OR	DR	TOT	PF	FD					BS	BA	
15	Emeka Udenyi	F	12:55	4-5	0-0	0-0	2	4	6	1	0	8	0	1	1	0	0	10
25	Brandton Chatfield	F	16:35	4-8	1-3	0-0	3	3	6	1	1	9	0	0	0	0	1	12
0	Alex Schumacher	G	17:15	2-9	0-5	0-1	0	5	5	2	1	4	6	0	0	0	1	20
5	Cameron Tyson	G	13:52	3-5	1-2	0-0	1	0	1	2	0	7	1	4	0	0	0	13
11	Riley Grigsby	G	10:55	1-3	0-2	0-0	0	0	0	2	0	2	1	0	0	0	0	5
35	Matthew Levis		09:57	0-1	0-1	0-0	0	1	1	1	1	0	1	0	0	0	0	7
21	Viktor Rajković		10:28	4-6	1-3	0-0	1	1	2	1	2	9	0	1	0	0	0	12
33	Kobe Williamson		03:25	0-1	0-0	0-0	0	0	0	2	0	0	1	0	1	0	0	5
23	Seyi Reiley		04:38	0-0	0-0	2-2	0	2	2	0	1	2	0	0	0	0	0	1
Team							3	0	3			0		0				
<b>Totals</b>				18-38	3-16	2-3	10	16	26	12	6	41	10	6	2	0	2	17

Shooting By Period		
1 <sup>st</sup> FG%	18-38	47.4%
3PT%	3-16	18.8%
FT%	2-3	66.7%
GM FG%	18-38	47.4%
3PT%	3-16	18.8%
FT%	2-3	66.7%

Dead Ball Rebounds: 0, 1

Technical Fouls: NONE

George Washington - 24

NO.	Name	F	Min	FG	3P	FT	Rebounds			Fouls		TP	AS	TO	ST	Blocks		+/-
				M-A	M-A	M-A	OR	DR	TOT	PF	FD					BS	BA	
4	Ricky Lindo Jr.	F	15:48	1-2	0-1	3-5	0	1	1	1	3	5	0	1	1	1	0	-15
13	Hunter Dean	F	06:24	0-0	0-0	0-0	0	0	0	2	0	0	1	1	0	0	0	-2
2	Maximus Edwards	G	18:46	4-8	1-3	0-2	1	1	2	0	3	9	0	2	0	0	0	-13
10	Brendan Adams	G	17:13	0-3	0-2	3-5	1	0	1	0	3	3	0	1	0	0	0	-15
11	James Bishop	G	19:19	1-6	0-2	2-2	0	1	1	1	2	4	1	2	1	0	0	-17
3	Amir Harris		08:19	0-1	0-1	0-0	0	2	2	0	0	0	0	0	0	0	0	-5
21	Noel Brown		04:46	0-0	0-0	0-2	0	1	1	2	1	0	0	1	0	0	0	-6
14	Keegan Harvey		02:23	1-1	1-1	0-0	0	0	0	0	0	3	0	0	0	0	0	1
20	Qwanzi Samuels		07:02	0-1	0-1	0-2	0	1	1	0	0	0	0	0	0	1	0	-13
Team							0	4	4			0		0				
<b>Totals</b>				7-22	2-11	8-18	2	11	13	6	12	24	2	8	2	2	0	-17

Shooting By Period		
1 <sup>st</sup> FG%	7-22	31.8%
3PT%	2-11	18.2%
FT%	8-18	44.4%
GM FG%	7-22	31.8%
3PT%	2-11	18.2%
FT%	8-18	44.4%

Dead Ball Rebounds: 6, 0

Technical Fouls: NONE

	SEA	GWU
Biggest lead	22 (1 <sup>st</sup> 1:23)	3 (1 <sup>st</sup> 18:01)
Best Scoring Run	15 (1 <sup>st</sup> 1:23)	5 (1 <sup>st</sup> 0:03)
Lead Changes	1	
Times Tied	5	
Time with Lead	13:37	02:31

Points from	SEA	GWU
Turnovers	14	6
Paint	30	10
Second Chance	9	0
Fast Breaks	7	0
Bench	11	3

	Period by Period Scoring		
	1st	2nd	TOT
SEA	41	44	85
GWU	24	43	67



**Period 2**

**Period Starters:**

<b>GWU</b>	2 Edwards M	10 Adams B	11 Bishop J	13 Dean H	14 HarveyK
<b>SEA</b>	0 Schumacher A	5 Tyson C	11 GrigsbyR	15 Udenyi E	25 Chatfield B

Game Time	GWU	Score	Diff	SEA
20:00	3 HARRIS A substitution out			
20:00	13 DEAN H substitution in			
20:00				21 RAJKOVIĆ V substitution out
20:00				23 REILEY S substitution out
20:00				35 LEVINS M substitution out
20:00				0 SCHUMACHER A substitution in
20:00				5 TYSON C substitution in
20:00				11 GRIGSBY R substitution in
19:45	13 DEAN H 2pt FG in the paint, layup made (2)	<b>26-41</b>	<b>-15</b>	
19:45	2 EDWARDS Massist (1)			
19:23		<b>26-43</b>	<b>-17</b>	11 GRIGSBY R 2pt FG in the paint, hook shot made (4)
19:08	14 HARVEY K 3pt FG , jump shot missed			
19:05				25 CHATFIELD B defensive rebound (7)
18:54		<b>26-46</b>	<b>-20</b>	11 GRIGSBY R 3pt FG , jump shot made (7)
18:54				5 TYSON C assist (2)
18:34	10 ADAMS B 2pt FG in the paint, pull up jump shot made (5)	<b>28-46</b>	<b>-18</b>	
18:11		<b>28-49</b>	<b>-21</b>	0 SCHUMACHER A 3pt FG , jump shot made (7)
18:11				11 GRIGSBY R assist (2)
17:58	13 DEAN H 2pt FG in the paint, jump shot missed			
17:55				25 CHATFIELD B defensive rebound (8)
17:45				25 CHATFIELD B 3pt FG , jump shot missed
17:40				11 GRIGSBY R offensive rebound (1)
17:38				5 TYSON C 3pt FG second chance, jump shot missed
17:36	defensive dead ball rebound (7)			
17:36	13 DEAN H foul drawn (1)			25 CHATFIELD B foul personal (2 - 1)
17:27	14 HARVEY K 3pt FG , jump shot missed			
17:24				15 UDENYI E defensive rebound (7)
17:23	jump ball situation			
17:13		<b>28-51</b>	<b>-23</b>	15 UDENYI E 2pt FG in the paint, hook shot made (10)
17:13				0 SCHUMACHER A assist (7)
17:03	11 BISHOP J 3pt FG , jump shot made (7)	<b>31-51</b>	<b>-20</b>	
16:45		<b>31-54</b>	<b>-23</b>	11 GRIGSBY R 3pt FG , jump shot made (10)
16:45				0 SCHUMACHER A assist (8)
16:30	14 HARVEY K foul drawn (1)			25 CHATFIELD B foul shooting (3 - 2)
16:30	14 HARVEY K free throw 1 - 2 missed			
16:30	offensive dead ball rebound (8)			
16:30	13 DEAN H substitution out			
16:30	21 BROWN N substitution in			
16:30				25 CHATFIELD B substitution out
16:30				33 WILLIAMSON K substitution in
16:30	14 HARVEY K free throw 2 - 2 made (4)	<b>32-54</b>	<b>-22</b>	
16:20				33 WILLIAMSON K 2pt FG in the paint, layup missed
16:17	21 BROWN N defensive rebound (2)			
16:13	11 BISHOP J 3pt FG , jump shot made (10)	<b>35-54</b>	<b>-19</b>	



Official Basketball Play by Play - Second Half  
**Seattle U at George Washington**  
 12/25/22 SimpliFi Arena at Stan Sheriff Center, Honolulu  
 2022-23 Men's Basketball

Game Time: 8:30 AM  
 Game Duration: 1:59

Officials: Amy Bonner, Bart Lenox, Ryan Wells

Game Time	GWU	Score	Diff	SEA
16:13	2 EDWARDS M assist (2)			
15:58		<b>35-56</b>	<b>-21</b>	15 UDENYI E 2pt FG in the paint, driving layup made (12)
15:58				Timeout 30 Sec
15:58	14 HARVEY K substitution out			
15:58	20 SAMUELS Q substitution in			
15:58				0 SCHUMACHER A substitution out
15:58				35 LEVINS M substitution in
15:47	11 BISHOP J 2pt FG in the paint, floating jump shot made (12)	<b>37-56</b>	<b>-19</b>	
15:17	2 EDWARDS M steal (1)			15 UDENYI E turnover bad pass (2)
15:14	2 EDWARDS M 2pt FG fast break from turnover in the paint, dunk, made (11)	<b>39-56</b>	<b>-17</b>	
15:08	Timeout media			
15:08				15 UDENYI E substitution out
15:08				21 RAJKOVIĆ V substitution in
14:51		<b>39-58</b>	<b>-19</b>	33 WILLIAMSON K 2pt FG in the paint, layup made (2)
14:51				11 GRIGSBY R assist (3)
14:31	11 BISHOP J 2pt FG in the paint, jump shot missed			
14:28	20 SAMUELS Q offensive rebound (2)			
14:26	11 BISHOP J 3pt FG second chance, jump shot missed			
14:23				21 RAJKOVIĆ V defensive rebound (3)
14:17				35 LEVINS M 3pt FG, jump shot missed
14:13	20 SAMUELS Q defensive rebound (3)			
14:11	2 EDWARDS M foul drawn (4)			11 GRIGSBY R foul shooting (3 - 3)
14:11	2 EDWARDS M free throw fast break 1 - 2 made (12)	<b>40-58</b>	<b>-18</b>	
14:11				5 TYSON C substitution out
14:11				33 WILLIAMSON K substitution out
14:11				0 SCHUMACHER A substitution in
14:11				25 CHATFIELD B substitution in
14:11	2 EDWARDS M free throw fast break 2 - 2 made (13)	<b>41-58</b>	<b>-17</b>	
13:59		<b>41-60</b>	<b>-19</b>	25 CHATFIELD B 2pt FG in the paint, dunk, made (11)
13:59				11 GRIGSBY R assist (4)
13:46	10 ADAMS B 2pt FG in the paint, driving layup made (7)	<b>43-60</b>	<b>-17</b>	
13:28	2 EDWARDS M foul class B technical (0 - 0)			
13:28		<b>43-61</b>	<b>-18</b>	0 SCHUMACHER A free throw 1 - 1 made (8)
13:14		<b>43-64</b>	<b>-21</b>	25 CHATFIELD B 3pt FG, jump shot made (14)
13:14				35 LEVINS M assist (2)
12:55	21 BROWN N foul drawn (2)			11 GRIGSBY R foul shooting (4 - 4)
12:55	21 BROWN N free throw 1 - 2 made (1)	<b>44-64</b>	<b>-20</b>	
12:55				11 GRIGSBY R substitution out
12:55				23 REILEY S substitution in
12:55	21 BROWN N free throw 2 - 2 made (2)	<b>45-64</b>	<b>-19</b>	
12:36	11 BISHOP J foul shooting (2 - 1)			35 LEVINS M foul drawn (2)
12:36		<b>45-65</b>	<b>-20</b>	35 LEVINS M free throw 1 - 3 made (1)
12:36		<b>45-66</b>	<b>-21</b>	35 LEVINS M free throw 2 - 3 made (2)
12:36	11 BISHOP J substitution out			
12:36	3 HARRIS A substitution in			
12:36		<b>45-67</b>	<b>-22</b>	35 LEVINS M free throw 3 - 3 made (3)
12:22	2 EDWARDS M 3pt FG, jump shot missed			
12:19				23 REILEY S defensive rebound (3)
11:56				0 SCHUMACHER A 2pt FG in the paint, turnaround jump shot missed



Official Basketball Play by Play - Second Half  
**Seattle U at George Washington**  
 12/25/22 SimpliFi Arena at Stan Sheriff Center, Honolulu  
 2022-23 Men's Basketball

Game Time: 8:30 AM  
 Game Duration: 1:59

Officials: Amy Bonner, Bart Lenox, Ryan Wells

Game Time	GWU	Score	Diff	SEA
11:52	3 HARRIS A defensive rebound (3)			
11:45	10 ADAMS B 2pt FG in the paint, layup made (9)	<b>47-67</b>	<b>-20</b>	
11:25				21 RAJKOVIĆ V 3pt FG , jump shot missed
11:20				offensive rebound (33)
11:20	2 EDWARDS M substitution out			
11:20	11 BISHOP J substitution in			
10:59				turnover shot dock (8)
10:59				35 LEVIS M substitution out
10:59				5 TYSON C substitution in
10:49	3 HARRIS A 3pt FG from turnover, jump shot missed			
10:44				25 CHATFIELD B defensive rebound (9)
10:26	21 BROWN N steal (1)			0 SCHUMACHER A turnover bad pass (1)
10:18	21 BROWN N 2pt FG from turnover in the paint, hook shot missed			
10:15				23 REILEY S defensive rebound (4)
10:11				5 TYSON C 3pt FG , jump shot missed
10:08	21 BROWN N defensive rebound (3)			
09:59	11 BISHOP J 2pt FG in the paint, layup missed			
09:54	offensive rebound (19)			
09:54				0 SCHUMACHER A substitution out
09:54				35 LEVIS M substitution in
09:50	11 BISHOP J 3pt FG second chance, jump shot missed			
09:46				21 RAJKOVIĆ V defensive rebound (4)
09:35				5 TYSON C 3pt FG , jump shot missed
09:33	11 BISHOP J defensive rebound (2)			
09:30	10 ADAMS B 2pt FG fast break in the paint, dunk, made (11)	<b>49-67</b>	<b>-18</b>	
09:30	11 BISHOP J assist (2)			
09:23	21 BROWN N substitution out			
09:23	14 HARVEY K substitution in			
09:23				23 REILEY S substitution out
09:23				15 UDENYI E substitution in
09:03				35 LEVIS M 2pt FG outside the paint, jump shot missed
09:00	11 BISHOP J defensive rebound (3)			
08:57	10 ADAMS B 3pt FG , jump shot made (14)	<b>52-67</b>	<b>-15</b>	
08:57	3 HARRIS A assist (1)			
08:38				5 TYSON C 3pt FG , jump shot missed
08:38	defensive rebound (22)			
08:38				21 RAJKOVIĆ V substitution out
08:38				11 GRIGSBY R substitution in
08:20	10 ADAMS B 3pt FG , jump shot made (17)	<b>55-67</b>	<b>-12</b>	
08:20	11 BISHOP J assist (3)			
08:10				Timeout 30 Sec
08:10				35 LEVIS M substitution out
08:10				0 SCHUMACHER A substitution in
08:06	3 HARRIS A steal (1)			11 GRIGSBY R turnover bad pass (1)
07:55	10 ADAMS B 3pt FG from turnover, jump shot missed			
07:52				0 SCHUMACHER A defensive rebound (6)
07:43				25 CHATFIELD B 3pt FG , jump shot missed
07:40	10 ADAMS B defensive rebound (2)			
07:32	20 SAMUELS Q turnover lost ball (1)			25 CHATFIELD B steal (1)
07:07				11 GRIGSBY R 3pt FG from turnover, jump shot missed



Official Basketball Play by Play - Second Half  
**Seattle U at George Washington**  
 12/25/22 SimpliFi Arena at Stan Sheriff Center, Honolulu  
 2022-23 Men's Basketball

Game Time: 8:30 AM  
 Game Duration: 1:59

Officials: Amy Bonner, Bart Lenox, Ryan Wells

Game Time	GWU	Score	Diff	SEA
07:03				15 UDENYI E offensive rebound (8)
07:01				15 UDENYI E 2pt FG from turnover second chance in the paint, layup blocked
07:01	14 HARVEY K block (1)			
06:56				15 UDENYI E offensive rebound (9)
06:56				5 TYSON C 3pt FG from turnover second chance, jump shot missed
06:54				offensive rebound (40)
06:54	20 SAMUELS Q substitution out			
06:54	2 EDWARDS M substitution in			
06:54	14 HARVEY K foul shooting (1 - 2)			25 CHATFIELD B foul drawn (2)
06:54		<b>55-68</b>	<b>-13</b>	5 TYSON C free throw 1 - 2 made (8)
06:54		<b>55-69</b>	<b>-14</b>	5 TYSON C free throw 2 - 2 made (9)
06:54	foul coach class A technical (3)			
06:54	foul bench class A technical (4)			
06:54		<b>55-70</b>	<b>-15</b>	5 TYSON C free throw 1 - 2 made (10)
06:54		<b>55-71</b>	<b>-16</b>	5 TYSON C free throw 2 - 2 made (11)
06:50	11 BISHOP J foul shooting (3 - 5)			5 TYSON C foul drawn (1)
06:50		<b>55-72</b>	<b>-17</b>	5 TYSON C free throw 1 - 3 made (12)
06:50		<b>55-73</b>	<b>-18</b>	5 TYSON C free throw 2 - 3 made (13)
06:50		<b>55-74</b>	<b>-19</b>	5 TYSON C free throw 3 - 3 made (14)
06:40	10 ADAMS B 2pt FG outside the paint, jump shot missed			
06:37				0 SCHUMACHER A defensive rebound (7)
06:29	3 HARRIS A steal (2)			0 SCHUMACHER A turnover bad pass (2)
06:19	14 HARVEY K turnover travel (1)			
06:03				5 TYSON C turnover lost ball (5)
06:03	3 HARRIS A foul drawn (1)			25 CHATFIELD B foul personal (4 - 5)
06:03				25 CHATFIELD B substitution out
06:03				33 WILLIAMSON K substitution in
05:41	14 HARVEY K 3pt FG from turnover, jump shot missed			
05:38				11 GRIGSBY R defensive rebound (2)
05:32				33 WILLIAMSON K 3pt FG, jump shot missed
05:30	10 ADAMS B defensive rebound (3)			
05:28	10 ADAMS B foul drawn (4)			5 TYSON C foul personal (3 - 6)
05:28	10 ADAMS B substitution out			
05:28	20 SAMUELS Q substitution in			
05:28	14 HARVEY K substitution out			
05:28	21 BROWN N substitution in			
05:10	21 BROWN N 2pt FG in the paint, hook shot made (4)	<b>57-74</b>	<b>-17</b>	
04:53				0 SCHUMACHER A 2pt FG in the paint, layup missed
04:51	3 HARRIS A defensive rebound (4)			
04:47	20 SAMUELS Q 3pt FG, jump shot missed			
04:44				11 GRIGSBY R defensive rebound (3)
04:17				15 UDENYI E 2pt FG outside the paint, turnaround jump shot missed
04:13				33 WILLIAMSON K offensive rebound (1)
03:59				11 GRIGSBY R 3pt FG second chance, jump shot missed
03:55	21 BROWN N defensive rebound (4)			
03:45	2 EDWARDS M 2pt FG in the paint, layup made (15)	<b>59-74</b>	<b>-15</b>	
03:45	2 EDWARDS M foul drawn (5)			33 WILLIAMSON K foul shooting (3 - 7)
03:45	11 BISHOP J substitution out			



Official Basketball Play by Play - Second Half  
**Seattle U at George Washington**  
 12/25/22 SimpliFi Arena at Stan Sheriff Center, Honolulu  
 2022-23 Men's Basketball

Game Time: 8:30 AM  
 Game Duration: 1:59

Officials: Amy Bonner, Bart Lenox, Ryan Wells

Game Time	GWU	Score	Diff	SEA
03:45	10 ADAMS B substitution in			
03:45				33 WILLIAMSON K substitution out
03:45				25 CHATFIELD B substitution in
03:45	2 EDWARDS M free throw 1 - 1 made (16)	<b>60-74</b>	<b>-14</b>	
03:44	10 ADAMS B foul personal (1 - 6)			0 SCHUMACHER A foul drawn (2)
03:22		<b>60-77</b>	<b>-17</b>	5 TYSON C 3pt FG , jump shot made (17)
03:22				25 CHATFIELD B assist (1)
03:13	10 ADAMS B 2pt FG outside the paint, pull up jump shot made (19)	<b>62-77</b>	<b>-15</b>	
02:38		<b>62-80</b>	<b>-18</b>	5 TYSON C 3pt FG , jump shot made (20)
02:38				25 CHATFIELD B assist (2)
02:25	10 ADAMS B 3pt FG , jump shot missed			
02:22				15 UDENYI E defensive rebound (10)
01:57				5 TYSON C turnover dribbling violation (6)
01:57	10 ADAMS B substitution out			
01:57	34 STAMOULIS T substitution in			
01:57				15 UDENYI E substitution out
01:57				21 RAJKOVIĆ V substitution in
01:51	2 EDWARDS M substitution out			
01:51	0 TALIPOVL substitution in			
01:47	3 HARRIS A foul drawn (2)			21 RAJKOVIĆ V foul shooting (2 - 8)
01:45	3 HARRIS A free throw 1 - 2 made (1)	<b>63-80</b>	<b>-17</b>	
01:45	3 HARRIS A free throw 2 - 2 missed			
01:43				5 TYSON C defensive rebound (2)
01:30		<b>63-82</b>	<b>-19</b>	25 CHATFIELD B 2pt FG in the paint, dunk, made (16)
01:30				11 GRIGSBY R assist (5)
01:17	34 STAMOULIS T 3pt FG , jump shot missed			
01:13				5 TYSON C defensive rebound (3)
00:56				0 SCHUMACHER A 3pt FG , jump shot missed
00:54				21 RAJKOVIĆ V offensive rebound (5)
00:39		<b>63-85</b>	<b>-22</b>	21 RAJKOVIĆ V 3pt FG second chance, jump shot made (12)
00:39				5 TYSON C assist (3)
00:34	3 HARRIS A foul drawn (3)			0 SCHUMACHER A foul personal (3 - 9)
00:34	21 BROWN N substitution out			
00:34	14 HARVEY K substitution in			
00:34				0 SCHUMACHER A substitution out
00:34				5 TYSON C substitution out
00:34				12 NUNN B substitution in
00:34				41 NAFARRETE J substitution in
00:34	3 HARRIS A 1&1 free throw 1 made (2)	<b>64-85</b>	<b>-21</b>	
00:34	3 HARRIS A 1&1 free throw 2 made (3)	<b>65-85</b>	<b>-20</b>	
00:21				41 NAFARRETE J 2pt FG in the paint, layup missed
00:18	14 HARVEY K defensive rebound (1)			
00:07	20 SAMUELS Q 2pt FG in the paint, layup made (2)	<b>67-85</b>	<b>-18</b>	
<b>END OF GAME</b>				
<b>GWU 67-85 SEA</b>				



Official Basketball Box Score - Second Half  
**Seattle U at George Washington**  
 12/25/22 SimpliFi Arena at Stan Sheriff Center, Honolulu  
 2022-23 Men's Basketball

Game Time: 8:30 AM  
 Game Duration: 1:59

Officials: Amy Bonner, Bart Lenox, Ryan Wells

**Seattle U - 44**

NO.	Name	Min	FG			Rebounds			Fouls		TP	AS	TO	ST	Blocks		+/-
			M-A	M-A	M-A	OR	DR	TOT	PF	FD					BS	BA	
15	Emeka Udenyi	F 12:18	2-4	0-0	0-0	2	2	4	0	0	4	0	1	0	0	1	0
25	Brandton Chatfield	F 15:23	3-5	1-3	0-0	0	3	3	3	1	7	2	0	1	0	0	10
0	Alex Schumacher	G 15:55	1-4	1-2	1-1	0	2	2	1	1	4	2	2	0	0	0	16
5	Cameron Tyson	G 16:14	2-7	2-7	7-7	0	2	2	1	1	13	2	2	0	0	0	3
11	Riley Grigsby	G 15:43	3-5	2-4	0-0	1	2	3	2	0	8	4	1	0	0	0	6
33	Kobe Williamson	04:37	1-3	0-1	0-0	1	0	1	1	0	2	0	0	0	0	0	-9
35	Matthew Levis	06:43	0-2	0-1	3-3	0	0	0	0	1	3	1	0	0	0	0	-9
21	Viktor Rajković	08:27	1-2	1-2	0-0	1	2	3	1	0	3	0	0	0	0	0	-2
23	Seyi Reiley	03:32	0-0	0-0	0-0	0	2	2	0	0	0	0	0	0	0	0	-2
12	Brody Nunn	00:34	0-0	0-0	0-0	0	0	0	0	0	0	0	0	0	0	0	-4
41	Jaren Nafarrete	00:34	0-1	0-0	0-0	0	0	0	0	0	0	0	0	0	0	0	-4
Team						2	0	2			0		1				
<b>Totals</b>			13-33	7-20	11-11	7	15	22	9	4	44	11	7	1	0	1	1

Shooting By Period		
2 <sup>nd</sup> FG%	13-33	39.4%
3PT%	7-20	35.0%
FT%	11-11	100%
GM FG%	13-33	39.4%
3PT%	7-20	35.0%
FT%	11-11	100.0%

Dead Ball Rebounds: 0, 0

Technical Fouls: NONE

**George Washington - 43**

NO.	Name	Min	FG			Rebounds			Fouls		TP	AS	TO	ST	Blocks		+/-
			M-A	M-A	M-A	OR	DR	TOT	PF	FD					BS	BA	
4	Ricky Lindo Jr.	F 00:00	0-0	0-0	0-0	0	0	0	0	0	0	0	0	0	0	0	0
13	Hunter Dean	F 03:30	1-2	0-0	0-0	0	0	0	0	1	2	0	0	0	0	0	-6
2	Maximus Edwards	G 13:43	2-3	0-1	3-3	0	0	0	0	2	7	2	0	1	0	0	-9
10	Brendan Adams	G 16:20	7-10	2-4	0-0	0	2	2	1	1	16	0	0	0	0	0	-5
11	James Bishop	G 14:59	3-7	2-4	0-0	0	2	2	2	0	8	2	0	0	0	0	1
21	Noel Brown	12:01	1-2	0-0	2-2	0	3	3	0	1	4	0	0	1	0	0	2
20	Qwanzi Samuels	14:32	1-2	0-1	0-0	1	1	2	0	0	2	0	1	0	0	0	10
3	Amir Harris	12:36	0-1	0-1	3-4	0	2	2	0	3	3	1	0	2	0	0	3
14	Keegan Harvey	08:31	0-3	0-3	1-2	0	1	1	1	1	1	0	1	0	1	0	-1
34	Theofanis Stamoulis	01:57	0-1	0-1	0-0	0	0	0	0	0	0	0	0	0	0	0	0
0	Laziz Talipov	01:51	0-0	0-0	0-0	0	0	0	0	0	0	0	0	0	0	0	0
Team						1	1	2			0		0				
<b>Totals</b>			15-31	4-15	9-11	2	12	14	6	9	43	5	2	4	1	0	-1

Shooting By Period		
2 <sup>nd</sup> FG%	15-31	48.4%
3PT%	4-15	26.7%
FT%	9-11	81.8%
GM FG%	15-31	48.4%
3PT%	4-15	26.7%
FT%	9-11	81.8%

Dead Ball Rebounds: 1, 1

Technical Fouls: Edwards 2<sup>nd</sup> 13:28 Coach 2<sup>nd</sup> 6:54 Bench 2<sup>nd</sup> 6:54

	SEA	GWJ
Biggest lead	23 (2 <sup>nd</sup> 17:13)	0 (1 <sup>st</sup> 20:00)
Best Scoring Run	7 (2 <sup>nd</sup> 6:50)	10 (2 <sup>nd</sup> 8:20)
Lead Changes	0	
Times Tied	0	
Time with Lead	19:45	00:00

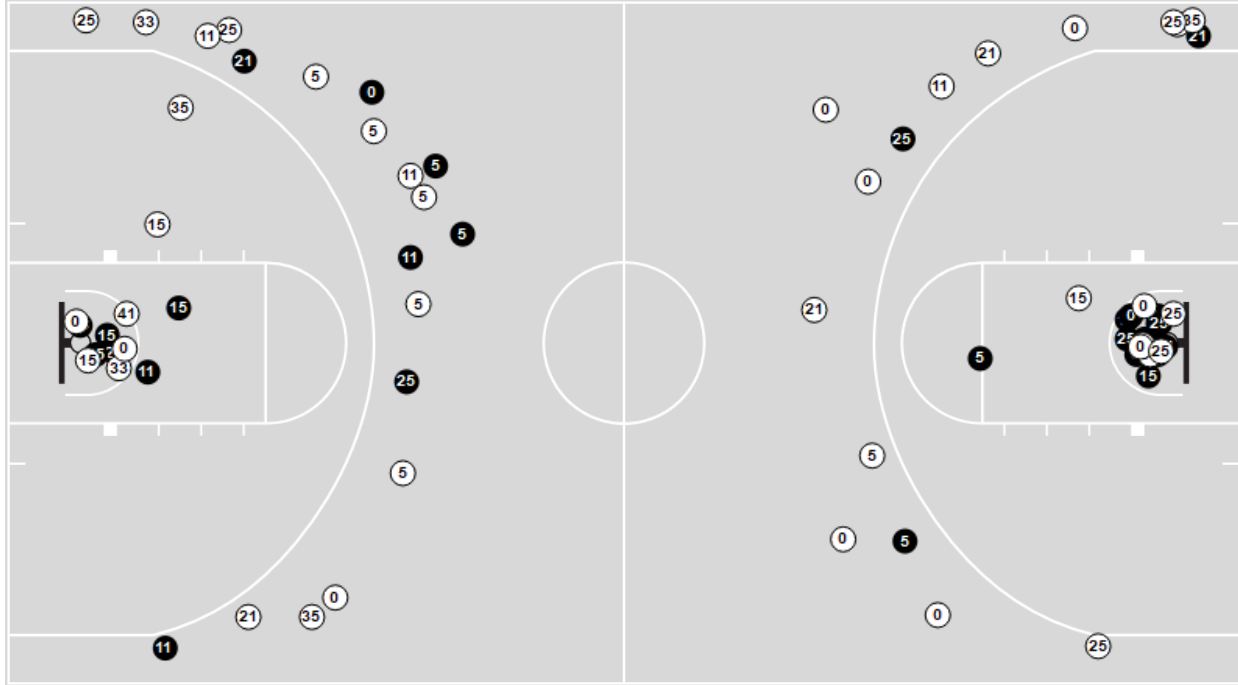
Points from	SEA	GWJ
Turnovers	2	3
Paint	12	20
Second Chance	5	0
Fast Breaks	0	8
Bench	8	10

	Period by Period Scoring		
	1st	2nd	TOT
SEA	41	44	85
GWJ	24	43	67

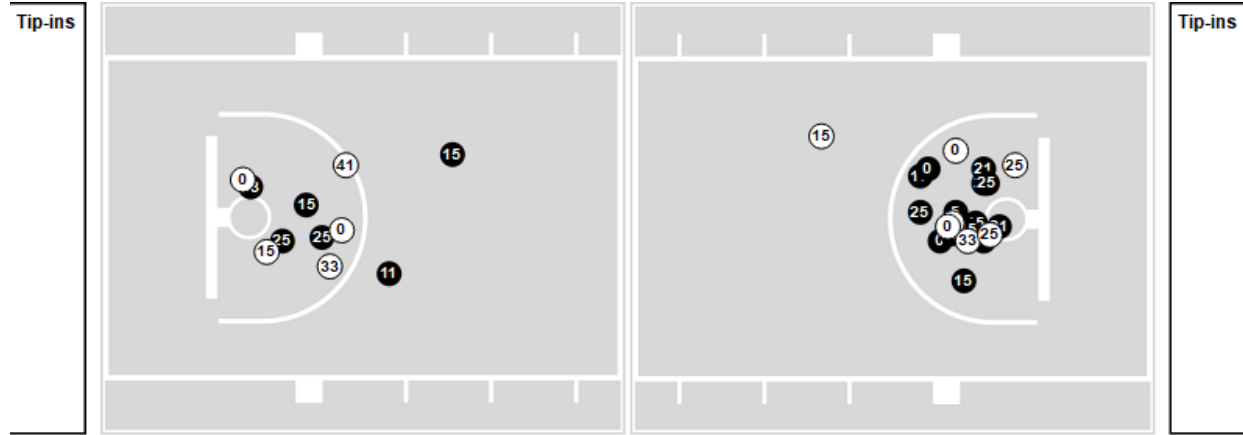


Players => All ; FG Types => All ; Results => All ;  
**Seattle U**

**All Field Goals**



**Shots in the Paint**



● Made    ○ Missed    N - Player Number

Seattle U	M/A	%
Field Goals	31/71	44
2 Points	21/35	60
3 Points	10/36	28
Free Throws	13/14	93

Seattle U	M/A	%
Points in the Paint	42 (21/33)	64
Fast Break Points	7 (3/4)	75
Second Chance Points	14 (7/17)	41
Effective FG%	51	

